



Super Easy Slime Making Instructions

Warnings

- This kit contains small parts, keep away from small children
- Making slime with borax should be supervised by an adult.
- Borax is a natural salt mineral that should be handled with care. Use caution when mixing and avoid contact with eyes, skin and mouth.
- It's best to enjoy making your slime in an area away from rugs & carpeting.
- Store your slime in an airtight plastic container, it will keep for several weeks.

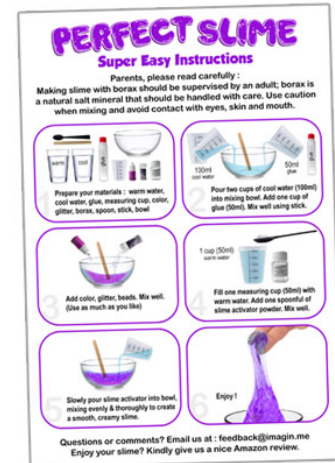
Super Easy Slime Making Instructions

1

- Make sure your kit arrived undamaged and that all bottles are sealed properly.
- If you have any problems at all, please write us at : feedback@imagin.me
- We will take care of any problems ASAP and make things right.

Your kit should contain:

6 bottles of glue
6 color dyes
3 slime activators
1 color beads
1 glow-in-the-dark powder
2 spoons
6 mixing sticks
2 measuring cups
1 instruction sheet



Super Easy Slime Making Instructions

2

- Find a good area to play and create.
- Prepare a ceramic mixing bowl, warm & cold water, and some paper towels 😊

3

In your mixing bowl :

Add ONE full bottle of glue + TWO measuring cups of cold water (stir well)

1 glue



**2 cups (100 ml)
cold water**



Add any color + any glitter. (Stir well)



PLEASE NOTE: This example of color and glitter is very simple. You can add any combination colors, glitter, beads, glow in the dark powder you would like. This is where you get to be as creative as you want to be.

Super Easy Slime Making Instructions

5

Prepare the borax slime activator.

- Add ONE SPOONFUL of borax powder into ONE CUP of WARM water.
- MIX WELL until all the powder is dissolved.



*Please use care when using borax powder.
(Avoid contact with eyes, skin and mouth.)

6

The final & most important step. 😊

- Slowly add the borax solution into the mixture in the bowl.
- MIX WELL – Don't Stop Stirring (10-20 seconds)
- The consistency of your slime will slowly get thicker and thicker until you can easily lift it out of the bowl.



7

AND YOU'RE DONE !

Each slime will turn out slightly different, depending on how much borax powder you mix into the warm water solution. The more powder you use, the thicker your slime will turn out. The less powder, the thinner and more gooey your slime will be. If you follow the instructions we just presented, your slime should look like this:



Blue Ocean Slime

recipe:

Blue color (4-5 drops)

Silver glitter

Get Creative !

Now that you have the basics, you can get creative and try different things.

You can combine color dyes to create new colors.

You can add different combinations of glitter, beads & glow in the dark powder.

If you have small objects like buttons, sequin, styrofoam, etc – you can experiment and create truly unique slimes.

You can even add natural ingredients like small dried leaves, potpourri, etc.

Important – change the ratio

To make smaller amounts of slime, you can reduce the formula by half.

For example :

Instead of using - 1 bottle of glue + 2 cups of cold water + 1 cup of borax solution

You can use - Half a bottle of glue + 1 cup of cold water + Half a cup of borax solution

More glue / More slime

You will run out of glue before you run out of borax powder to make the slime activator.

We did that on purpose, so you don't have to buy another slime kit. All you need to do is buy some more glue. You can use clear glue or white glue, which will create different results. Enjoy !

Examples

A few fun examples of slimes we've made with Perfect Slime.



Thank You !

Thank you so much for purchasing Perfect Slime. We really appreciate your support and hope you will enjoy many fun moments with your slime kit. We'd love to hear your thoughts and suggestions on how we can improve our products and your experience.

Reviews are most welcome.

<https://amzn.to/2R9b9RJ>

ImaginMeKids Perfect Slime

feedback@imagin.me